



## The Hornsby Quarry Rehabilitation Works Development Application – Response to Submissions and Revised Project Scope (RTS)

Engagement Outcomes Report

**Client:** Hornsby Shire Council

**Date:** 13 December 2019

---

**Contact:**

Calli Brown  
calli.brown@elton.com.au  
9437 2600

---

**SYDNEY**  
**02 9387 2600**

Level 6, 332 - 342 Oxford Street  
Bondi Junction NSW 2022

---

www.elton.com.au  
consulting@elton.com.au  
Sydney | Brisbane | Canberra | Darwin | Melbourne | Perth  
ABN 56 003 853 101

---

<b>Prepared by</b>	Calli Brown
--------------------	-------------

---

<b>Reviewed by</b>	Holly Love
--------------------	------------

---

<b>Date</b>	13 December 2019
-------------	------------------

---

<b>Version</b>	FINAL
----------------	-------

---

# Contents

<b>1</b>	<b>BACKGROUND AND CONTEXT</b>	<b>3</b>
1.1	The site	3
1.2	Previous engagement	3
1.2.1	Plan Your Parkland	3
1.2.2	DA preparation engagement	4
1.2.3	Hornsby Quarry DA and EIS	5
<b>2</b>	<b>THE HORNSBY QUARRY REHABILITATION WORKS DEVELOPMENT APPLICATION – RESPONSE TO SUBMISSIONS AND REVISED PROJECT SCOPE (RTS)</b>	<b>6</b>
2.1	Exhibition	6
2.2	Engagement to support exhibition	6
2.2.1	Engagement Objectives	6
2.3	Tools and techniques	7
<b>3</b>	<b>ENGAGEMENT OUTCOMES</b>	<b>8</b>
3.1	Mall swing-by sessions	8
3.1.1	Feedback themes	8
<b>APPENDICES</b>		
A	A0 Boards used at Swing-by sessions	13

# 1 Background and context

## 1.1 The site

Hornsby Quarry is located within a picturesque bushland setting less than a kilometre away from Hornsby's thriving CBD. In 2002, Hornsby Council was legally obliged to pay \$26 million to acquire the Hornsby Quarry after it was abandoned by a mining company.

It is currently fenced off from the community as it is not safe to visit. This means few people have had the opportunity to appreciate its astonishing beauty.

Hornsby Shire Council plans to transform the quarry and adjoining Old Mans Valley, Hornsby Park and the area surrounding the crusher plant into a 59-hectare destination that is designed, owned, used and loved by the community.

## 1.2 Previous engagement

### 1.2.1 Plan Your Parkland

In 2017, as part of its commitment to creating parklands that are 'designed, owned, used and loved by the community', Council engaged the Shire's residents to 'Plan Your Parkland'. The objective of this engagement approach was for the community to provide their high-level ideas on the activities, uses and attractions for the future of the quarry site.

As part of this engagement, Council established a Community Deliberative Forum. Participants were randomly selected local residents that reflected the demographic profile of Hornsby Shire. The objective of the Forum is to provide residents with an avenue for long-term participation in the engagement process and to assist Council in considering the engagement outcomes.

This first phase of engagement resulted in the community being asked to 'Plan Your Parkland' by providing their blue-sky aspirations for the site. The engagement approach included:

- » Email to 40,000 residents
- » Letters and emails to stakeholders
- » Project website updates
- » Establishment of a Community Deliberative Forum, which met on three occasions
- » Stakeholder meetings with:
  - > Mountain biking groups
  - > Bush care & environmental groups, and a
  - > Presentation at a meeting of the local business chamber
- » Two community swing-bys held in Hornsby Mall that reached over 600 residents

The main themes heard are included in the graphic below:

## Most popular activities and attractions requested by the community



**Walking tracks**



**Picnic areas and open spaces**



**Mountain biking**



**Environmental**



**Cafés / restaurants**



**Arts / community / historical facilities**

### 1.2.2 DA preparation engagement

At the conclusion of the ‘Plan Your Parkland’ engagement, Council began preparing a Development Application (DA) and accompanying Environmental Impact Statement (EIS) for the earthworks required to create a safe and accessible landform. This targeted engagement approach included:

- » Email to 40,000 residents
- » Letters and emails to stakeholders
- » Project website updates
- » Presentations to:
  - > Community Deliberative Forum
  - > environmental and bushwalking stakeholder groups
- » Four community swing-bys in Hornsby Mall that reached XX residents
- » Social media posts
- » Media release

This phase of engagement again demonstrated overwhelming support and understanding around the concept of transforming the quarry into parklands and identified a number of key themes:

- » **Accessibility** - support for making the site accessible to the public
- » **Environment** – support for careful management of any impacts to site vegetation, particularly the ecologically endangered communities.

- » **Engagement** - recognition of Council's commitment to engagement and support for transparency and openness as the project continues.
- » **Geotechnical investigations** – acknowledgement that the impacts of mining operations on site stability and safety had been appropriately investigated as part of the EIS process

### 1.2.3 Hornsby Quarry DA and EIS

Council submitted its DA and accompanying EIS to the Sydney North Planning Panel for assessment in the first half of 2019.

In keeping with Council's ongoing commitment to engaging with the community throughout the transformation of the quarry, Council undertook engagement during the formal exhibition period. The core purpose of engagement was to:

- » Raise awareness and understanding of the DA and EIS amongst key stakeholders, including those who participated in prior engagement rounds, and the broader community
- » Support the community and stakeholder to make submissions

Engagement was focused on a number of key messages that were designed around the outcomes of previous engagement and responded to the questions, concerns and interests previously expressed by the community and key stakeholders. This engagement approach was developed and delivered around three focus points:

1. the creation of a safe, stable, accessible and flexible landform that could accommodate the range of activities the community has identified for the parklands
2. the extent of earthworks required to deliver the required landform objectives
3. the mitigation measures as set out in the EIS respond to potential impacts on the environment and community during construction

#### Engagement tools and techniques

- » Updates to the website
- » Emails to 40,000 residents
- » Emails to Community Deliberative Forum and environmental stakeholders
- » Two community swing-by sessions that reached 594 residents
- » Site tour for Manor Road and Ferntree Close residents (21 participants)

#### Key themes heard

- » General support for the transformation of the site
- » Support for Council's approach to enhancing the natural environment

#### Submissions

Forty-six (46) submissions were received during exhibition of the Hornsby Park Landform DA.

The majority of submissions were concerned about tree losses, potential habitat impacts and for the preservation of the volcanic diatreme that is expressed in the eastern quarry cliff face.

## 2 The Hornsby Quarry Rehabilitation Works Development Application – Response to Submissions and Revised Project Scope (RTS)

As a result of the points that were raised in the forty-six (46) submissions for the Hornsby Park Landform DA, Council has been able to further reduce the extent of works that will be undertaken on site. In response, Council have prepared *The Hornsby Quarry Rehabilitation Works Development Application – Response to Submissions and Revised Project Scope* (RTS).

### 2.1 Exhibition

Public Exhibition for *The Hornsby Quarry Rehabilitation Works Development Application – Response to Submissions and Revised Project Scope* was between 22 November 2019– 13 January 2020.

### 2.2 Engagement to support exhibition

#### 2.2.1 Engagement Objectives

The core purpose of engagement was to:






- » Raise awareness and understanding of the DA and EIS amongst key stakeholders, including those who participated in prior engagement rounds, plus also the broader community.
- » Raise awareness and understanding of the RTS process
- » Support the community and stakeholders to make submissions to the RTS

The communication and engagement approach was developed and delivered around three focus points:

1. Reduced extent of earthworks which preserves more trees across the site
2. A lower solution for landform within the quarry, which preserves more of the dramatic cliff faces on all sides, including the eastern diatrema feature.
3. A shorter construction timeframe, down from 24 months to 21 months, and reduced impacts associated with construction.

## 2.3 Tools and techniques

The following tools and techniques were implemented:

	<p><b>Project website</b></p> <ul style="list-style-type: none"> <li>» Provide project updates</li> <li>» Promote opportunities for engagement and community involvement</li> <li>» Updated FAQs</li> <li>» Encourage users to provide feedback by providing a link to the DA application</li> </ul>
	<p><b>Email Blast to 40,000 residents</b></p> <ul style="list-style-type: none"> <li>» Provide project updates</li> <li>» Promote opportunities for engagement and community involvement</li> <li>» Encourage users to provide feedback by providing a link to the DA application</li> </ul>
	<p><b>Social media posts</b></p> <ul style="list-style-type: none"> <li>» Promote opportunities for engagement and community involvement</li> </ul>
	<p><b>Emails to Community Deliberative Forum, stakeholders and site tour participants</b></p> <ul style="list-style-type: none"> <li>» Provide project updates</li> <li>» Encourage users to provide feedback by providing a link to the DA application</li> <li>» Promote opportunities for engagement and community involvement</li> <li>» Keep stakeholders engaged and generate a sense of continuity and project progression</li> </ul>
	<p><b>Community swing-by sessions</b></p> <ul style="list-style-type: none"> <li>» Reach those not previously engaged with the project -particularly Culturally and Linguistically Divers (CALD) communities, and young people</li> <li>» Opportunity for project team and technical experts to directly engage with the community</li> <li>» Provide information and generate and collect feedback</li> <li>» Supported by collateral with images designed to enhance understanding and foster engagement</li> </ul>



## 3 Engagement Outcomes

### 3.1 Mall swing-by sessions

To engage as many people as possible, two ‘swing by’ sessions were held in Hornsby Mall during high foot traffic times. In total, approximately **542 people** were actively engaged, with a solid proportion being from CALD communities, young families and older residents.

The sessions involved members of the project team talking to the community about the RTS process, answering questions, and providing details on how submissions could be made. These conversations were supported by AO boards that explained the changes. A copy of the two new AO boards that were produced for this round of engagement are located in the appendix.

The details of the sessions are outlined below:

Session date	Number of people engaged
Saturday 30 November 11am-1pm	314
Thursday 5 December 11am-1pm	228
<b>TOTAL</b>	<b>542</b>

#### 3.1.1 Feedback themes

A thematic analysis has been undertaken of the conversations and notes that were taken during the swing-bys.

The results of the analysis are outlined below, and appear in order of frequency. To clearly outline sentiment and capture the nuances of views expressed, direct quotes from the community are included below the analysis.

##### Support for the project

The most common theme heard from the community was their support for the project. The enthusiasm expressed was universal and covered a wide variety of age groups and cultural backgrounds.

The most frequent comment heard was along the lines that it will be a great community asset when it is finished, and the community is also incredibly pleased that plans for the park are progressing.

##### Direct quotes from the community:

“Overall, the project is fantastic”

“Looks great, want to see once all the regeneration works completed”

“Will be fantastic when finished. Shame it will take so long. The short-term pain in well worth the long-term gain”

“Great – keep going”.

“It will be brilliant when its finished”

“I’m so glad it’s definitely happening”

“Great concept of converting this into public space”

“The proposal looks awesome! What a great project and facility”

“This is all good, I’ve lived in area all my life so it’s great to see”

"I'm really excited by the project, I live close by"

### Support for diatrema walls

A majority of people were very impressed and enthusiastic with how the proposal will expose more of the diatrema walls and to further enhance the 'quarryness' of the site. In particular, people who were familiar with the original DA were very supportive of the plan to expose more of the south-west quarry wall.

#### Direct quotes from the community:

"Great to see more of the walls"

"The south west wall is crucial"

"I will make a submission to the revised DA. Very pleased that more of the eastern diatrema is being revealed with the revised landform solution"

"I like the in-quarry solution, with more cliffs preserved."

"It's positive that the DA revisions will expose more cliffs, the diatrema and have reduced impacts on trees."

"I'm happy to see walls being retained."

### Support for reduced impact on vegetation

Although the majority of those engaged were not familiar with the details of the original DA, there was significant support expressed for the new approach to reducing the impact on vegetation and thus, retaining more bushland.

Those who were familiar with the original DA, were very pleased with Council's response to the issues raised.

#### Direct quotes from the community:

"I agree with the reduced impact on vegetation- we kill too many trees (except in Hornsby)"

"Natural habitat is under too much pressure"

"Support for the reduced impact"

"Good less tree impacts"

"Great to hear about less impact on trees"

"The reduction in tree removal in the south west is fantastic"

### Support for Council's approach

A large number of people commented on the amount of work Council is doing to ensure the best outcome for the community, and many who stayed for a lengthy discussion mentioned they were starting to understand the complexities involved with the task.

#### Direct quotes from the community:

"What is being proposed is positive, but it's also great to see you've listened to concerns of residents. For example, less impact on environment"

"Council is doing a great job"

"I'm very impressed with the amount of work that has been done to date"

"You have my approval"

"I applaud Council for this"

"I can see that you are trying to get a balance"

"I'm really pleased with the effort that Council is going to minimise the impact of the works"

“Great to hear the site won’t require major work to make it safe. I like the idea of keeping all four walls, especially the diatrema. Great to see you are working on solutions to keep cost down”

“Thank you for what you’re doing for the community”

“This is a very exciting project – well done.”

## Engagement

A large proportion of people who stopped by had already participated in previous rounds of engagement, knew there was ongoing engagement or received the eNewsletter and came to a session for the first time.

They were very curious to understand what the changes were as a result of the submissions and articulated their support for Council listening and acting on feedback. Those who had stopped by out-of-curiosity also expressed support for the long-term commitment to engagement and for demonstrating to the community what they had done with what they had heard.

### Direct quotes from the community

“It’s great you listened”

“I feel so much better knowing you have done something in response to the feedback”

“The three issues I was concerned about and detailed in my submissions have all been acted on. I am very happy”

“Thanks for keeping us informed”

“I really appreciate that you are keeping us informed”

“The more information about process the better”

“I’m glad the project team are speaking to the community about the project”

## RTS

There was a very mixed response to the RTS. Those that had made submissions were pleased to see a change, but there was also a sense from some members of the community that changes were made based on the feedback from a small minority of vested interests.

### Direct quotes from the community

“Why have you done all this just because of 46 people?”

“We need more people making positive comments, so the negatives are balanced”

“Haven’t we got enough trees?”

“I liked the amphitheatre idea you have with the first DA”

“I like the idea of keeping the ‘quarryness’, but I’m still concerned about the impact on wildlife, specifically powerful owls”

“No issues with the landform proposals”

“Happy with the landform proposals and would like to see improved access provided from adjoining areas into the park”

“Great proposal, can’t wait to see the works done”

“The earthworks plan seems sensible”

“In southwest, EOW line should be moved in. No trees should be removed from area mapped ‘poor quality Blackbutt Gully’ and no excavation should be permitted if it is only to meet landform aims”

“Consider less impact to north mound”

“The northern mound could be fenced off and excluded from the project” (concerns about noise and for owls)

## **Bushfire concerns**

Engagement was undertaken during a time of bushfires, with a number burning close by in the neighbouring Hawkesbury Local Government Area. It is worth noting that a handful of people responded directly to retention of natural vegetation with a concern about fire risk on the site.

### **Direct quotes from the community**

“We need more trees but they need to be under control, especially for bushfires”

“Risk of a fire in the valley”

“This is a fire risk”

## **Powerful Owl**

The works that will be undertaken in the northern area of the site, and in particular tree removal needed to ensure the sites safety, will impact a pair of roosting powerful owls by removing the tree where their roosting nest is located. Although only a few people expressed concern about the pair of powerful owls on site, they all stayed at the swing by for extended periods of time and spoke to multiple members of the team about their concern.

### **Direct quotes from the community**

“I’m very concerned about loss of habitat for Powerful Owl in area behind Manor Road – owls have only just come back after the NCX works scared them away”

“The Powerful Owl cannot relocate itself/ must roost where it is now, in the north”

“It’s appalling that there will be work in the gully where the owls are”

## **Seed regeneration bank**

The two people who had lengthy discussions with the project team about the Powerful Owls, also mentioned their concern about the works impact on seed regeneration.

### **Direct quotes from the community**

“No material should be excavated or moved because this impacts on seedbank regeneration”

“I am very concerned about preserving seedbanks and will be making further submissions”

# Appendices

# A **A0 Boards used at Swing-by sessions**

# HORNSBY PARK

The transformation from quarry to park continues



## A Hornsby Quarry Rehabilitation Works Development Application - Response to Submissions and Revised Project Scope (RTS) for DA/101/2019 has been lodged.

Forty-six (46) submissions were received in relation to the original DA submission for the quarry rehabilitation, which was lodged earlier this year.

The majority of submissions related to tree losses, potential habitat impacts and preservation of the volcanic diatreme that is expressed in the eastern quarry cliff face.

In response to these submissions, Council has reduced the extent of works that will be undertaken on site to create Hornsby Park.

The RTS and additional submissions will be assessed by an independent planner and reported to the Sydney North Regional Planning Panel following conclusion of this exhibition period in early 2020.

### What the revisions mean:

- » Reduced extent of earthworks which preserves more trees across the site
- » A lower solution for landform within the quarry, which preserves more of the dramatic cliff faces on all sides, including the eastern diatreme feature.
- » A shorter construction timeframe, down from 24 months to 21 months, and reduced impacts associated with construction.

Importantly, Council is still on track to deliver the first stage of the parkland creation in 2023, turning the local landmark into a spectacular new open space for the community to enjoy.



Northern Face



Southern Face

# HAVE YOUR SAY

## The Hornsby Quarry Rehabilitation Works Development Application-Response to Submissions and Revised Project Scope



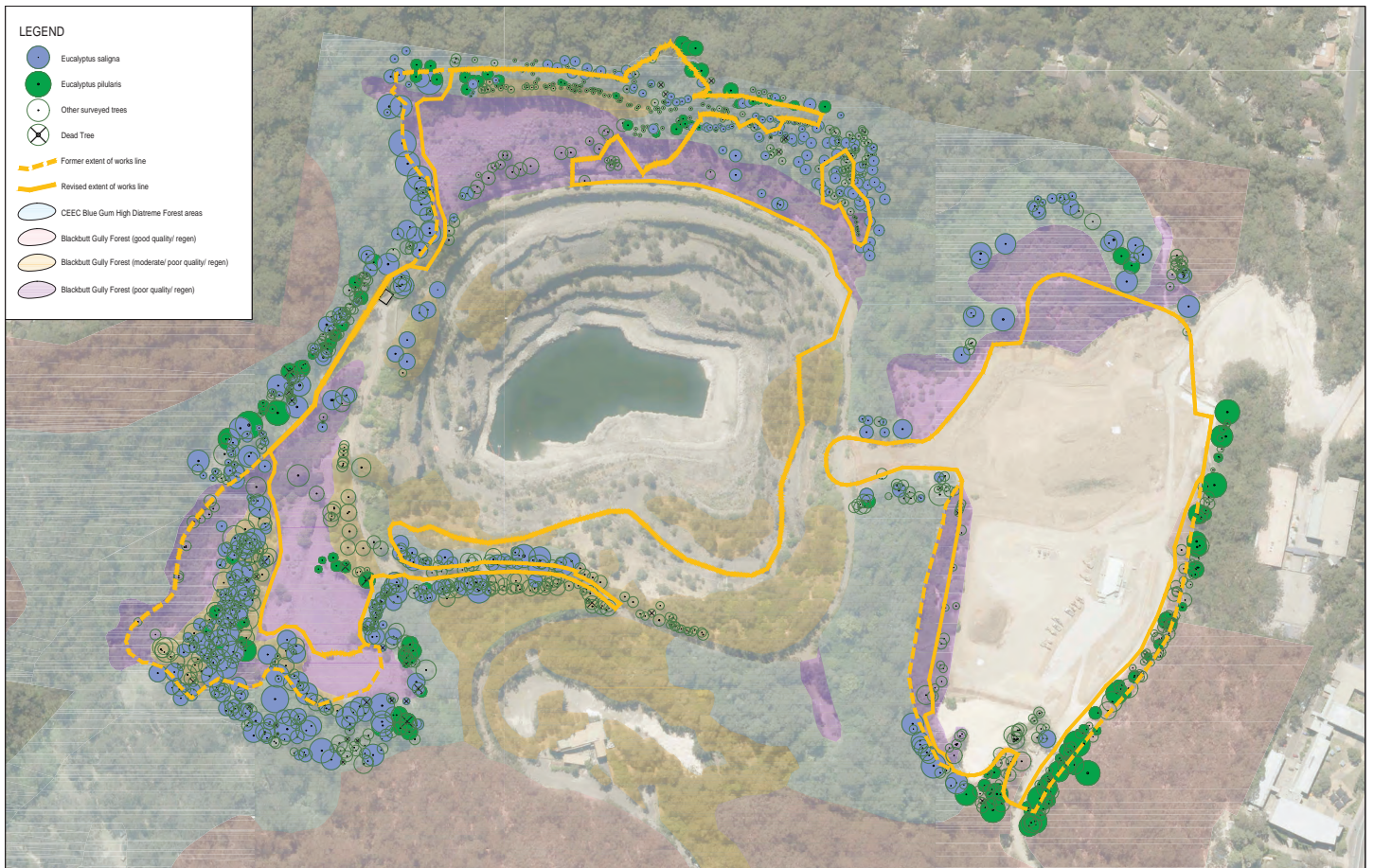
Rehabilitation Works Development Application – Response to Submissions and Revised Project Scope (RTS) documentation has been lodged and is available for review and comment up until 13 January 2020.

### HOW DO I MAKE COMMENTS?

To view and make comments on the DA, go to the Hornsby Shire Council website [www.hornsby.nsw.gov.au/council/noticeboard/your-say/current-exhibitions/hornsby-quarry-rts](http://www.hornsby.nsw.gov.au/council/noticeboard/your-say/current-exhibitions/hornsby-quarry-rts) or go to the dedicated website for the **Hornsby Park and Quarry Redevelopment Project** at [hornsbypark.com.au](http://hornsbypark.com.au) where a direct link is provided.

### HOW DO I STAY UPDATED?

The Hornsby Park website [hornsbypark.com.au](http://hornsbypark.com.au) has a document library and summarises the history of the project to this point. This will be your best way to stay in touch with the project and future opportunities to review and comment on any aspect of the planning and design towards the opening of the restored quarry and parkland in 2023.



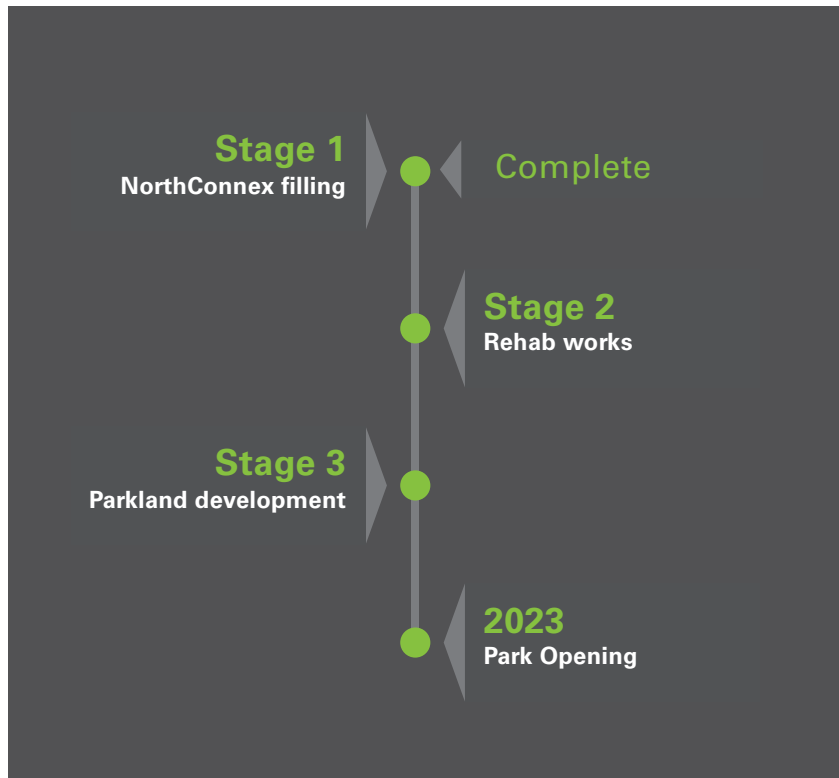


# HORNSBY PARK



From quarry to park...the beginning of a new story

Only a short walk away from Hornsby station, Hornsby Quarry has been hidden behind barbed wire for much of the last century. In 2002 Hornsby Shire Council purchased the quarry. Council plans to transform Hornsby Park into a destination that is owned, designed, used and loved by the community.



## Quarry Crusher Plant

Abandoned buildings that once processed material extracted from the quarry site are located on a flat area at the end of Quarry Road.



## Old Mans Valley

Old Mans Valley sits in a well-defined natural valley between Hornsby Quarry and Peats Ferry Road.



## Quarry void

Featuring dramatic level changes, exposed rock walls and an open water body, the quarry void is the centrepiece of the parklands.

# FILLING THE QUARRY

Since March 2017, excavated fill material was transported from the NorthConnex road project to the former Hornsby Quarry. Over one million cubic metres of material was used to create the foundations of a broadacre parkland across different precincts within the 59 hectare site, combining the quarry with adjoining lands in the Old Mans Valley and Hornsby Park.



## Discover the new landform

As fill material from the NorthConnex tunnel project was being placed in the quarry void, an exciting new landform started to emerge. The fill will raise the ground level and assist in stabilising steep slopes and cliff faces created by the quarrying operations, which ran through much of the twentieth century.

The new landform will be further developed to create flexible spaces that will be accessible and suitable for a range of potential future recreational activities.

In the raised floor of the quarry void, a water body is expected to be created, fed by groundwater and rainfall.

From the water's edge, the landform will rise across elevated platforms incorporating gentle embankments. Graded entry will be provided into the quarry void from the northern side along with accessible pathways.

Extensive rehabilitation of bushland areas will be undertaken across the site, including retention and restoration of degraded areas on surrounding upslopes, which already substantially form a beautiful backdrop to the future parklands within the Quarry and Old Mans Valley.

# HORNSBY PARK

## THE TRANSFORMATION FROM QUARRY TO PARK CONTINUES



NorthConnex has finished delivery of fill material to Hornsby Quarry and have now demobilising from the site.

**Council has lodged a Development Application (DA) with an Environmental Impact Statement (EIS) for the next stage of the works proposed for the former rock quarry and Old Mans Valley sites. The DA is concerned with earthworks that are required to make the site safe, enable environmental restoration and deliver a flexible landform that will be suitable for a variety of recreational experiences.**

The EIS provides recommendations about how to stabilise parts of the quarry and make the site safe. It also outlines ways to protect the environment during construction. The DA will be assessed by independent planners and determined by the Sydney North Planning Panel.

A range of safety issues remain on site that will be rectified through the landform works including:

- » removal of unstable mining spoil from parts of the northern slope, and
- » measures to stabilise quarry cliff faces and implement rockfall exclusion zones.

The DA also provides guidance about how best to manage potential impacts on nearby residents, businesses and the community and addresses considerations such as noise, traffic and air quality. It also makes provisions for:

- » the preservation of important cultural assets and heritage items,
- » the protection of valuable vegetation,
- » the restoration and regeneration of impacted and poor quality forest areas, and
- » the management of potential impacts on soil, water and biodiversity within the site.



